



26363-30 | Bently Nevada | proximity probe

Our Product Introduction

for more products please visit us on achieversinstruments.com

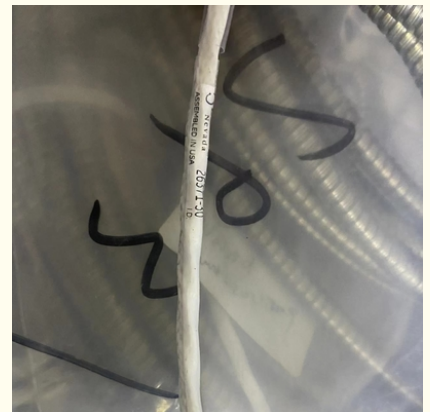
Basic Information

- Place of Origin: USA
- Brand Name: BENTLY
- Certification: ATEX
- Model Number: 26363-30
- Minimum Order Quantity: 1
- Price: Negotiable
- Packaging Details: carton
- Delivery Time: Negotiable
- Payment Terms: T/T
- Supply Ability: 100pcs per month



Product Specification

- Output Interface: Analog/digital Signals For DCS/PLC Integration
- Operating Temp.: -30°C To +70°C (-22°F To +158°F)
- Power Supply: Typically 24V DC (varies By System Configuration)
- Certifications: ATEX, IECEx (for Hazardous Environments, If Applicable)
- Warranty: Varies By Supplier (typically 12 Months For Refurbished Units)
- Lead Time: Subject To Availability (often Sourced Via Specialized Distributors)
- Highlight: **Bently Nevada proximity probe, industrial proximity sensor probe, Bently Nevada 26363-30 probe**



Product Description

26363-30 | Bently Nevada | Proximity Probe

Product Attributes

Attribute	Value
Output Interface	Analog/digital signals for DCS/PLC integration
Operating Temp.	-30°C to +70°C (-22°F to +158°F)
Power Supply	Typically 24V DC (varies by system configuration)
Certifications	ATEX, IECEx (for hazardous environments, if applicable)
Warranty	Varies by supplier (typically 12 months for refurbished units)
Lead Time	Subject to availability (often sourced via specialized distributors)

Product Description

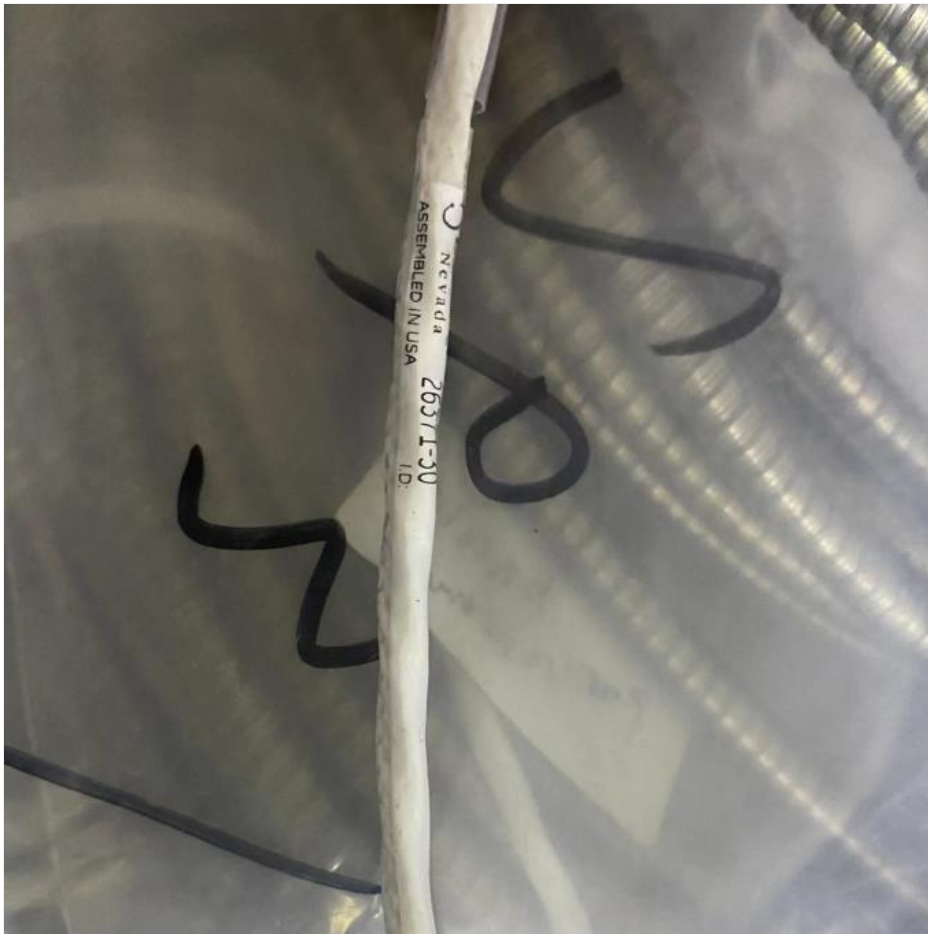


Bently Nevada is a global leader in industrial asset condition monitoring and protection, specializing in vibration, pressure, and speed measurement solutions for critical machinery. Founded in 1956 by Don E. Bently, the company pioneered eddy-current proximity probes, revolutionizing rotor dynamics monitoring. Acquired by GE in 2002, Bently Nevada operates in over 50 countries, serving industries such as oil & gas, power generation, and mining.

The Bently 26363-30 is a specialized industrial automation component commonly used in distributed control systems (DCS) and programmable logic controller (PLC) applications. Manufactured by Bently Nevada, this module is designed for high reliability in critical industrial environments. It typically serves as part of vibration monitoring systems, helping to detect and prevent equipment failures in rotating machinery such as turbines, compressors, and pumps.

Technical Specifications

Model Number	26363-30
Manufacturer	Bently Nevada
Product Type	Vibration Monitoring Module
Application	Machinery protection & condition monitoring (turbines, compressors, pumps)
Compatibility	Works with Bently Nevada 3500/3300 monitoring systems
Input Signal	Accepts vibration, speed, or position sensor signals
Mounting Type	DIN rail or panel-mounted
Enclosure Rating	IP20 (standard) / higher protection available in specific variants
Communication	RS-232/RS-485, Modbus (depends on system integration)
Sampling Rate	High-speed data acquisition for real-time monitoring
Alarm Thresholds	Configurable relay outputs for fault detection
Weight	Approx. 0.5 kg (varies by configuration)





Since Year 2012

Achievers Automation Limited is a well-established player in the field of industrial automation, with over 12 years of experience. The company offers a comprehensive range of industrial automation components and instruments, serving customers in over 45 countries worldwide with top-quality goods and efficient services.



Frequently Asked Questions

Q: Are the Products Genuine OEM Units?

A: These items have been certified by Achievers Automation Limited to be genuine OEM Units obtained through OEM or independent third-party channels.

Q: How will you arrange shipment?

A: We can arrange shipment based on your request. We have cooperated forwarder who can arrange shipment via FedEx, DHL, TNT with good price.

Q: What is the warranty of goods?

A: One-year Warranty.



Achievers Automation Limited



13828861501



joanna@achieversautomation.com



achieversinstruments.com

RM 509, 5/F, THE CLOUD, 111, TUNG CHAU STREET, TAI KOKTSUI, KOWLOON, HONG KONG